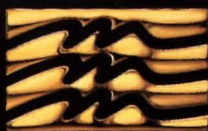


# Knightrmare



MINDSCAPE



— BROADSWORD —



ANGLIA  
Television Limited

MINDSCAPE PRESENTS

# Knighmare



BY TONY CROWTHER, AMIGA AND ATARI ST

© 1991 Anglia Television Ltd and Broadsword Television Ltd.  
Game © 1991 Mindscape International Ltd. All rights reserved.  
CAPTIVE © 1990/1991 Mindscape International Ltd. All rights reserved.

Written by Tony Crowther.

## Credits

### DESIGN

ANTONY CROWTHER, TIM CHILD, JAN THWAITES, CHRIS CROWTHER

### PROGRAMMING

ANTONY CROWTHER

### DIRECTOR

PHIL HARRISON

### SOFTWARE PRODUCER

STEVE WHITTLE

### GRAPHICS

JAN THWAITES, STEVE LENEY, ANTONY CROWTHER  
STEVE THOMPSON

### STORY

TIM CHILD

### MANUAL

PHIL HARRISON, STEVE LENEY

### MUSIC

RICHARD JOSEPH

### SOUND EFFECTS

ANGLIA TELEVISION AUDIO DEPARTMENT, ANTONY CROWTHER,

### PACKAGING DESIGN

MARK DESIGN

### QUALITY ASSURANCE

DAVID "POG" AMOR, ARON PHELAN, STEVE WHITTLE,  
CHRIS CROWTHER, LEE SINGLETON

### PATS ON THE BACKS

RICHARD LEINFELLNER,  
ROSS GOODLY,  
GARY, KIRSTIE, SAM,  
CLARE, PAM, CLAUD,  
MARK, ANDREW,  
GEOFF S, MAX, GEOFF H,  
TIM, SUE, CLARE,  
AND ALL AT BROADSWORD TV LTD.



## An Adventure Begins

"There is another place, a different world, a certain time," said Treguard, peering down at us from the great chair, as we huddled beside the broad hearth at Dunshelm.

Our bones were still chill from the journey, and all four of us suffered the occasional dying shiver.

The great fortresses of England are not built for comfort; stray far from their banked fires, and winter howls through the dank stone corridors, as through any mountain pass.

"Best to think of The Quest as a living thing," said the Dungeon Master, "though it does not live as you live – rather it does not die...."

He looked again at each of us in turn with those strange, compelling eyes. We were not, it is true, an impressive band.

I was the oldest, and largest, yet still short of my full growth. Dickon, the youngest, looked too far from home; watery blue eyes peering with childish innocence from a pallid freckly complexion, whilst James glared back at Treguard, trading inner fire with the Dungeon Master, and trying at the same time to inch nearer the warm glow from the pine logs.

Only Sean seemed composed, but I guessed that like me, he was nervous in the Dungeon Master's presence, and striving to seem relaxed.

Four days earlier, we had assembled on the solitary strip of granite and tarmac which serves as railway station to Lower Alcombe, our rucksacks bulged with hastily packed sleeping bags, and our pockets with assorted items which refused to cram into the misshapen rucksacks.

The grubby diesel railcar which grated to a halt before us did nothing to enhance our image as prospective Knight-errants and adventurers par excellence, but it was transport, and we had far to ride.

'You'd just better be right', growled Dickon. 'I've gone and missed Scout camp and everything. What's more we'd payed and they won't give us a refund.' He hunched down into the grit-infested draylon.

'An' it was the Isle of Wight, an' I've never been there.'

James had the big ordinance survey map open across his lap. Now he stabbed downwards, angrily pointing at a spot just above his right knee.

'It's there I tell you. What's more, it's got to be the place. It's the only thing that could be! Ralph, tell them not to be so stupid!'

I leaned across and inspected the grubby old map for what seemed like the thousandth time. It showed a portion of Cumbria, where the high passes rose far above the captive lakes of

Windermere and Coniston. Printed just above the 2,000 foot contour line, was the one word 'Dungate', and beside it the indistinct icon of a solitary crumbling tower.

'I s'pect it's just an old crumbly watch-tower,' said Sean. 'In any case, it's in the wrong place. We've all read the Nightmare legend, and if what we've read is right then Treguard's castle was part of the Northern Watchguard. You know: Hotspur and his clan-bashers. Keep out the hairy scots. That means Dunshelm has got to be near Carlisle.'

James folded the map and stuffed it viciously into a side-pocket of his rucksack.

It's the way in. It's got to be. Can't be anything else, and in any case, it's the only clue we've got.

He hunkered down into his seat and spoke little for the rest of the journey.

The next day we broke camp early in the tented arena behind one of Ambleside's many tea shoppes, and struck out to the North, following James' map.

As we left the lake district tourist traps behind us, and climbed higher into the sky with the July sun, the Quest seemed little more than a midwinter dream, quite alien to this summertime hike down stone-walled lanes, where the only hazard to wayfarers was a clumsily-driven Sierra.

We broke for wayside pasties and pies just after six, and then climbed onward into the pink dusk of a high summer evening, its life extended by the altitude we had reached.

The stony lanes were now well behind us and below us, as we walked the barely discernable dotted line on the old survey map.

'We must have passed it hours ago,' said Sean, weariness promoting irritability. 'Even if we're only doing two miles an hour, we'd have found it – if there was anything to find!'

There followed a fierce debate in which our estimated speed over the ground was the subject of wide-ranging conjecture. Then, as if exhausted by such trivia, we plodded in silence through a narrow gap between two crumbling stone columns, and discovered on the path ahead of us, a single, erect rectangle of nothingness. Between it's hard, straight edges, was a blackness that made black look colourful.

'Elf-portal!' gasped James, triumphantly. 'I told you: we've found the way in!' He lurched forward, hauling his trailing rucksack onto his shoulder once more. Too exhausted, and too excited to argue, the rest of us staggered after him.

At the threshold, James did not hesitate. The same will-power and conviction that had driven all four of us to abandon other plans and devote our summer to finding Dunshelm, now drove him into and through that extreme blackness, and into.....

We followed.



On the new path beyond the gate, we jostled each other for space, as the newly-arrived collided impatiently with the recently-departed.

'Burr! What happened to summer?' asked Dickon.

Beyond the portal, it was earlier in the day, but much later in the year. The landscape also had changed for the high, narrow passes of the Peaks has give way to a plateau, hedged with broader, older mountains. Dominating the view and the wide valley which led to it, there squatted the grey menace of a fortress, which we knew instinctively as Dunshelm.

Treguard's banner flew from above its crenellated towers, and light glowed from an open entry-port.

It was not however, the orange-yellow glow of welcoming fires, but the electro-blue threat of another energy portal which awaited us.

Before its shimmer, we paused and re-grouped, the slight figure of Dickon, moving to cover behind the larger bulk of myself and Sean. James inched forward again, and only my restraining hand prevented him from another wild lurch into the unknown.

'Oh come on!' gasped James impatiently. 'We didn't come all this way just to...'

An impatient 'Ah-hem!' interrupted him, the deep voice seeming to roll down the granite walls.

It was a voice to delve dungeons with; a voice that we all knew, as we knew that of our own schoolteachers.

It spoke again.

**'ENTER STRANGERS!'**

When the force-field had finished re-arranging my molecules, I found myself standing with Sean and James in the familiar great Ante-Chamber of Dunshelm. There was a sound like vegetables being pulled about behind us, and Dickon staggered through the portal.

Now we all stared excitedly and fearfully at the figure that confronted us.

'You'd better sit, I think,' said Treguard, and the Dungeon Master indicated some rough wooden stools which stood by a low, carved table. Then he took his own seat, and began to speak in deep, measured tones that compelled attention.

'First you should know, that there are many paths, but only four goals.' Treguard shifted in his chair and motioned to the tall figure of the Elf who lurked near the bookcase.

Pickle removed a tan leather tome from the shelf and drifted into the firelight, gliding with that odd catlike motion which is peculiarly Elvish. Treguard took the book and opened it.

'The first item of redemption is THE SHIELD. You may of course, choose to redeem another object first, but I cannot advise it.'

His tone left us in no doubt. It was a command, and not a suggestion he offered.

'Each of the Quest Objects remains symbolic, yet even a symbol has power, and power is what you will need to redeem the more difficult items, such as THE CUP, and of course, finally – THE CROWN.'

'How do we find this Shield?' asked James.

Treguard nodded to the Elf, who moved towards an arcane wall-map.

'Dungeons twist and turn, phase and change, yet the land holds true,' said Pickle. 'These are the Mines of Malapith. Old goblin breeding grounds actually. The stone-crunchers still lurk there, and the principle tool of The Opposition is a resident Hobgoblin. Its name is Haag.'

The Elf gave a shudder, more of distaste than fear. 'It is a hybrid – a war machine. Not bred naturally, if you can call anything goblinese natural, but cloned and cultured from the vats. It will not be easy to overcome.'

He shuddered again.

Singularly, or in small groups, goblins are no great threat to men or elves, but.... That's an entirely different matter.'

The elf also moved closer to the fire, for there seemed a greater chill in the smoky air.

'It's not just a matter of size,' said the elf. 'The grand hybrids have additional defences and overcoming them can prove quite gruelling.'

'Yes, but not impossible,' said Treguard gruffly.

'For the second retrieval, I would suggest THE SWORD. As a Quest it is well named, for its recovery will demand the honing and use of advanced combat skills. The arts to be employed here are those of the gladiator if you follow Western legend, or the Eastern disciplines of those called Samurai. Both must be practised if the sword is to be won.'

Pickle turned the pages, but glanced periodically to his master. Now he interjected.

'The guardian Master...They should know of the guardian.' Treguard nodded.

'As the elf says, there is a guardian. The lower ranks of goblinese have a great fear of serpents. In both fear and ignorance they worship the largest as gods. Such a worm is Khah-Roth, who dwells in the deep levels and guards the path to the sword. He has lived long and will be hard to kill.'

Sounds like mindless hacking, so far,' said James sharply.

'What of magic? What of alchemy? What of medicine?'

He rose to his feet and moved to examine the wall-map. Of all of us, James appears the most likely warrior with his dark celtic temper and quick-moving limbs. But his mind is always on sorcery,



and he has the soul of a savant.

'Should you attempt to retrieve the cup, then mastery of lore and spellcasting must be obtained,' said Treguard.

'It will take more than an apprentice to recover The Cup That Heals. The priestly healing skills must also be cultivated and refined, for without witch-doctorhood, the mightiest band of warriors will soon perish from the accumulation of wounds and weariness.'

Pickle dipped sharp chin to breast and seemed to nod in tacit agreement.

'And Badwife, Master? Shall I tell of her?'

It was Treguard's turn to nod. The elf turned to a fresh page in the tome.

'The Opposition has ceded a portion of the dungeons to a sorceress. Her real name is not known, but she masquerades as one of the grey sisters, and although she is not a witch, styles herself in witchly fashion. Badwife, she calls herself, and she is fey.'

Curiosity finally overcame Dickon's nerves, and in quavering voice he asked the Dungeon Master which of The Opposition held THE CROWN.

'None hold it, my young friend,' said Treguard kindly. 'None hold it and none may wear it, yet Lord Fear himself will strive his utmost to prevent you recovering it.'

'Which of us must go blindfold,' asked Sean, glancing apprehensively at the horned helmet which lay discarded on the low table. Treguard shook his head.

The Quest takes many forms, as well as many different paths. None of you must go without sight, for in this case, all four of you will be handicapped. Your path is the most dangerous of all for it exists only in the machine-mind.'

The elf joined him at his elbow and tutted impatiently.

'They call them computers, Master. The land within the computer is called – The Cyberspace – I think, though my own people scorn it as necromancy.'

Treguard nodded. 'This Cyberspace is as dangerous as any land beyond the portals. It is apparently endless and limited only by the memory capacity of machinedom. The greater dungeons now lie within it, and you must seek them. This is the challenge you journeyed so far to meet. If you accept it, then seize it!'

The Dungeon Master waved his hand, and we turned to the direction indicated. Another portal had appeared in the corner of the room. It was an ebony obelisk like the rectangle on the path above Ambleside.

Once again, James stepped forward without hesitation.

'Wait,' I said. 'This time we go together.'

And we did.

## The Quest Ahead

There are four quests in the world of Knightmare – each must be completed for you to amass the knowledge to defeat Lord Fear and banish him from this earth forever. Your trail will be a hard and arduous one, fear will be with you constantly and death is always around the next corner. Plan your quest well, for your success depends on initiative and skills that you might not even know you possess. Many will enter the domain of Knightmare and battle Lord Fear and his deadly henchmen...few will return with their lives. Fewer with their sanity.

Throughout the quest you will be called upon to use weapons and spells wisely and skillfully and solve the most intricate puzzles that Lord Fear has created in the world of Knightmare.

Arm your team with the best you can find and protect them from harm the best way you can. Remember that the more skilled your team members are, the stronger they become...and the more chance they have against Lord Fear and his evil marauding creatures.

## System Requirements

Knightmare requires an Amiga or Atari ST computer with at least 512k RAM and a Mouse. If you have more than 512k of RAM then certain aspects of the game will be enhanced – especially the music and sound effects and the amount of disk access.

Knightmare supports more than one disk drive if connected to your system.

In order to experience the atmosphere of the game to the full, we recommend that you play with headphones or with your machine connected to your Hi Fi.

## Loading the Game

Turn off your computer for 30 seconds.

Insert Knightmare Disk 1 into the internal disk drive.

If available, insert Knightmare Disk 2 into your external (or second) disk drive.

Turn on the computer.

Knightmare will load automatically.

If you don't have a second drive attached to your computer, then you will very occasionally have to swap Disk 1 and Disk 2 when prompted. Once the game has loaded, you will see the introduction sequence.



## Controlling the Game

Knightmare is operated by a mouse. Refer to the instructions that came with your computer if you are unsure which port it should be connected to.

Moving the mouse will move a pointer on screen.

There are a number of ICONS or buttons on screen that operate the functions of the game.

The ICONS are activated by pressing the mouse button while the pointer is over it. This is known as "clicking" on the ICON.

The mouse has two buttons, a left and a right hand button. Most icons have a different effect depending on which button is clicked.

For example, to MOVE forward, you must click with the left mouse button on the forward arrow of the movement cluster. However, to PUSH forward, you must click with the right mouse button on the forward arrow of the movement cluster. If there is nothing to push on, it will walk you forward.

The rest of this manual will refer to "clicking with the left button" or "clicking with the right button" to describe the function of the icon.

## Starting the Quest

On the title screen you will see three options.

1) START GAME will take you into the quest. If you do not go to DEFINE TEAM first then you will play with the default team.

2) DEFINE TEAM lets you set up your party of adventurers for the quest ahead.

The first task is to name each of the characters within the party. Type in the name and press return. Next give he/she or it a title – for example "The Brave".

Next use the slider bars to determine the characteristics of the player.

The first bar is the Breed of Character.

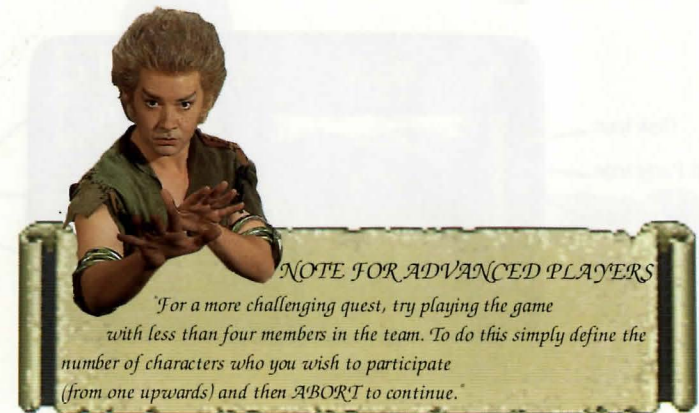
Choose from MAN, WOMAN, GOBLIN, OGRE, GHOUL, ELF, TROLL or INSECTOLE.

The second bar is the Profession of the Character.

Choose from ADVENTURER, GLADIATOR, SAMURAI, WIZARD, PRIEST or GENIE.

The third bar defines whether the Character is LEFT or RIGHT handed.

To define a whole team, repeat the above process for all four players.



3) LOAD GAME lets you restore a previously saved position in the quest and play from that point onwards. Select this option and insert your save game disk in a drive.

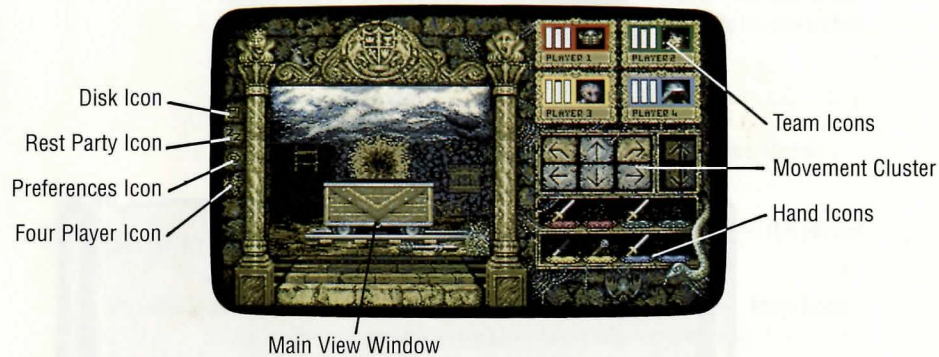


The file names on the save game disk will be listed. There is provision for only eight saved games on one disk. If the disk is not full, the empty files are listed as NO NAME. Click on the name of the file you wish to load.

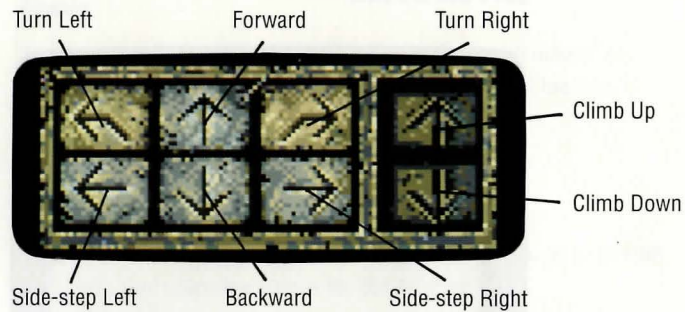
If the GET DIRECTORY prompt appears, the save game disk is not present. Insert the disk and click on GET DIRECTORY to continue.

To EXIT or if you make a mistake, click with the right mouse button or click on the 'close box' icon (the top left hand corner of the LOAD game window).

## The Game



## The Movement Cluster

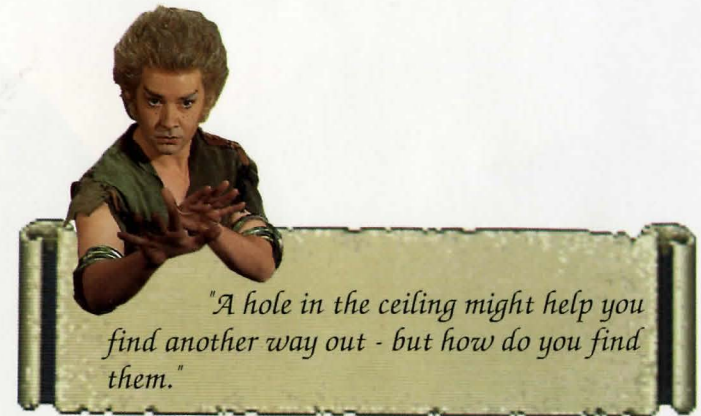


To move around the world of Knightmare, you will have to direct your party with commands via the movement cluster. This allows them to go forward, backwards, turn left or right and to side-step left or right.

To PUSH forward (against a wall or other object) use the right mouse button on the forward arrow icon.

The UP and DOWN arrows on the movement cluster only become operational when there is an opening above or below the party.

You can also use the numeric keypad on the keyboard to move the Team around.



## The Team Icons



These four displays show the name and face of each of the four members of the team. The box also displays a quick read-out of Health, Stamina and Magic.

The leader is the character with the Helmet on. This is the character through who's eyes you view the action in the VIEW WINDOW.

Any character can be made leader by clicking twice with the left mouse button on the Character Box or by moving the helmet to another member of the team.





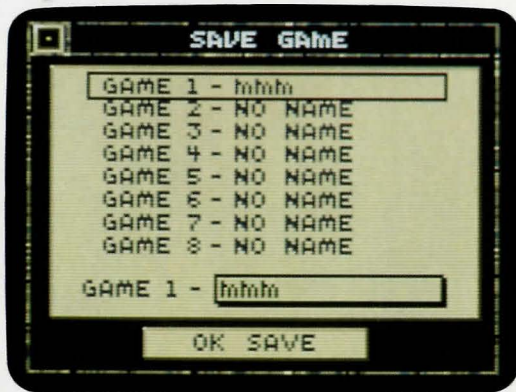




The layout of the characters in the party has strategic significance. You may wish to put your strongest members at the front to protect the weaker ones behind.

You can move the players around in the formation by clicking once with the left mouse button on each of the two characters who you wish to exchange places. They will then swap within the formation. Using this method, you can position the characters in exactly the right formation you require and change it depending on the situation.

## *Saving Games*



During your Quest you might feel that a rest will do you good – especially if the action is getting a little too hot to handle. You can SAVE your progress on a disk and continue the adventure from where you left off another time.

To SAVE a game, click with the left mouse button on the DISK ICON. You will need to have a blank disk handy to put your saved games on.

If there is no save game disk already in a drive, you will be asked to GET DIRECTORY or FORMAT . If you click on FORMAT, you will be asked which drive the disk is in. Click on the drive that has in it the disk you wish to format.

N.B. FORMAT WILL DESTROY ANY DATA ALREADY ON THAT DISK AND USES A SPECIAL FORMAT THAT CAN NOT BE USED FOR OTHER PROGRAMS.

If you wish to cancel at this point, click with the right mouse button or click with the left mouse button on the Close Box icon.

You will then be prompted with a message "OK FORMAT" – click on the button to format the disk.

GET DIRECTORY will list all of the saved game files on the disk.

To save a game, click on the position in the list of files that you wish to fill. This will bring up the file name requester prompting you to name the file. If nothing is entered the file will be stored as a blank file name with the number of the saved game before it. You can store a save game over the top of an existing one if you wish. The current name will appear in the file name requester. Delete this name if you want to change it.

Once you have named the file, click on OK SAVE to store on the disk.

To EXIT or if you make a mistake, click with the right mouse button or click on the 'close box' icon (the top left hand corner of the SAVE game window).

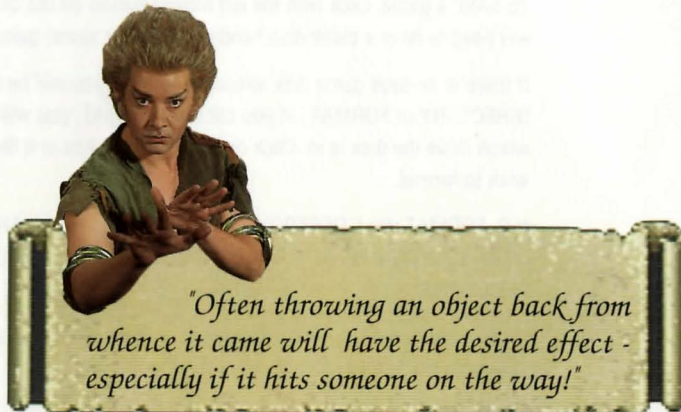
## *Objects*

As you move around the world of Knightmare you will come across objects and items that may be useful to your quest. To pick up an object, move the pointer into the VIEW WINDOW and put it in top of the object to be collected. Click with the left mouse button to pick it up.

While holding the object you can drop or throw it back down by clicking with the left mouse button. Whether you drop or throw it depends on how high off the ground the object is when you release it. Low down will drop it back on the ground, higher up will throw it away from you.

The distance that you can throw it is based on the weight of the object and your strength.





Pickle will help by telling you about the object you are carrying if you hold it in the pointer and click on the oval above the main View Window.

Objects can be put in the backpack of any of the characters within the team or straight into their hands by placing it over the relevant cushion on the hand icon area of the screen. To place an object in the backpack you can press the right mouse button when in the view window to bring up the backpack of the last character viewed. To bring up the backpack of any other character, press the right mouse button over the required characters icon on the Team icons.

## The Backpack Screen



Each character in the party has a backpack which can hold a number of items. The amount that any character can carry is limited by weight which is indicated on the backpack screen.

With the HEAD, CHEST, LEGS and FEET boxes, you can only place objects that should belong there. For example, a jacket goes on a chest box and boots go on a feet box.

The rest of the boxes are backpack areas in which anything can be placed (excluding 2 hand boxes the total here is 18).

A chest may be found in which you can place an extra eight small items.

To bring up the backpack screen of any character, click with the right mouse button on its Team icon. To close the screen, click with the left mouse button in the top left hand corner of the backpack screen.

To view the other characters, you can click on one of the three symbols on the top right hand corner of the backpack screen.

Click on the name of the character at the top of the backpack screen to view the stats screen. See below.

Comparisons between all four player's backpacks can be done by clicking with the left mouse button on the four-player icon.

If a red box appears around a character's body part in the backpack screen it is seriously injured. Magic will be required to cure it.

The backpack screen also shows the energy of the character...

## Energy

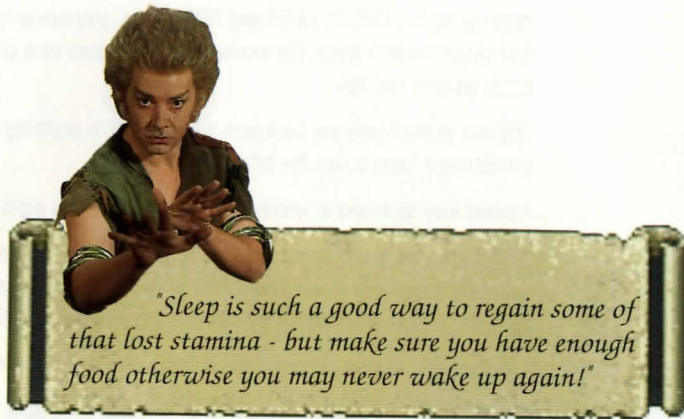
This is represented by the coloured bar in the figure in the centre. As the character loses energy the bar will drop. If it gets to the feet then the character is starving.

If your stamina is reduced while you have no energy then it cannot be replenished unless you use magic.

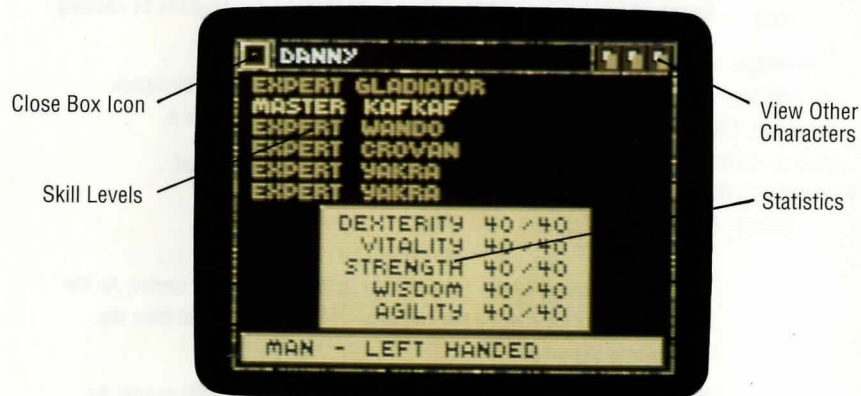
When the Stamina level falls below zero then the character will begin to lose Hit Points. In this condition, the more work done, the more injury is accumulated.

Use the Rest Party Icon to replenish Health, Stamina and Magic.





## Stats Screen



This screen shows the statistics of the character chosen. This will show where its skills and abilities lie and how they are increasing. This is the key to developing the strengths of your characters within the team.

STRENGTH will determine maximum encumbrance, throw range and punch power.

DEXTERITY indicates the characters skill at ranged combat – for example archery.

AGILITY indicates the skill held at hand to hand combat – for example swordfighting.

VITALITY is the level of healing power – i.e. how fast and how well the character recovers from a blow or attack.

ARMOUR shows the total accumulated armour value for the whole body of the character.

If the character is suffering any ailments, a white box will appear around his face icon. The illness will be listed on the right side of the stats screen. Different coloured type indicates the seriousness of the illness that is being suffered:

Grey type means it will cure itself in time. White type means it will never cure itself without magical aid and red type indicates a very serious condition that will require powerful magic to cure it.

To compare the stats of all four players at once, click with the right mouse button on the four-player icon .

Click on the name of any character to bring up the Backpack screen. Use the right mouse button to return to the main view, or close the window by clicking on the top left hand corner.

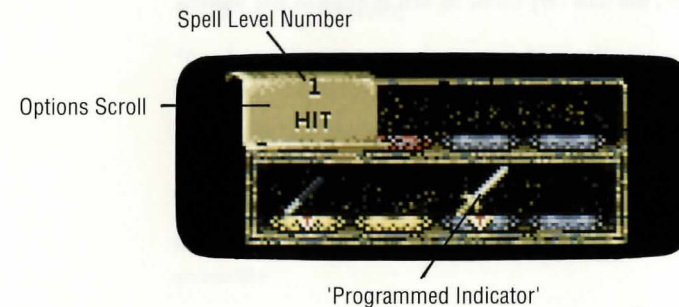
## The Hands



Across the bottom of the screen are the eight hand icons for the four players. This shows what is held in each character's hands at any time. As the players move within the formation, the hand positions move in relation.

You can place an object in each hand of a character. Either by picking up an object from the VIEW WINDOW and placing on the relevant cushion for the player, or by going into the BACKPACK screen and placing it in the hand position of the character.

## Using Weapons and Spells in the Hand



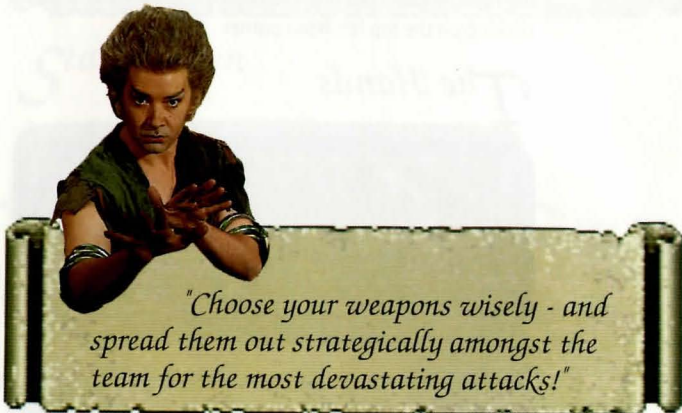


When a weapon or spell casting wand is held in the hand of a character, it can be activated by clicking with the right mouse button.

This will drop a scroll down from which the desired weapon move or spell type is selected. Click with the right mouse again to activate the desired effect.

The weapons and spells in the hand can be 'programmed' to do the same move repeatedly by clicking with the left mouse button on the desired option from the list available.

This will show a small triangle in the centre of the cushion to indicate that it is programmed. Further clicks with the right mouse button on that icon will cause the programmed effect.



## Encumbrance

A character's current carried weight is shown as CURRENT WEIGHT/MAXIMUM WEIGHT ie 21.1/43 kg. This is indicated in the backpack screen.

The current weight is usually displayed as a brown colour. If it turns to yellow you are overweight and the character will walk slower than usual. If it turns to red the character has exceeded his maximum encumbrance and will walk very slowly as well as begin to lose stamina.



## Skills

A character's skills increase in levels as he uses them through experience. The lowest level is novice and the highest is master.

For example, the more a gladiator uses a samurai sword, the more his samurai level will increase.

The weapons are assigned to a particular profession so as someone uses them, their skill in that category will increase.

If a character is using a weapon assigned to his profession he will be more proficient with it than someone using it as an 'unfamiliar' weapon.

## Magic

The use of magic is for the very skilled only – don't mess with magic – you don't want to end up with smoke in your face if it goes wrong! If magic is attempted by an incompetent, the resulting effect will be a feeble FIZZ.

You will need a wand to perform magic – placed in the wrong hands the effect will be less than impressive. In the right hands, however, the results can be devastating.

To use a spell, click on the wand when it is positioned in the hand to bring up the types available with that wand.

Choose the level of spell required by clicking on the number that appears on the scroll. Use the left and right mouse buttons to go up and down the spell casting levels.

If you don't have enough experience, then the higher levels will not be accessible.





*"You will need to gain experience with lower levels spells before attempting any serious wizardry!"*

## Preferences

Click on the Preferences Icon to bring up the preferences screen.

Here, you may make personal changes to the game. Use the slider bars to adjust mouse sensitivity, volume, screen position and colour palette.

Click on USE to go ahead with your changes or DEFAULT to return to the default settings.

Click the right mouse button to return to the game.

## Additional Keys Controls

F1	displays	red character backpack screen
F2	displays	green character backpack screen
F3	displays	yellow character backpack screen
F4	displays	blue character backpack screen
F5	displays	all four backpack screens
SHIFT F5	displays	all four stats screens
F6		Pause
F7		Save game
Z		Rest Party

# Knightmare

## Adventurers Club

To join the Knightmare Adventurers Club, please send a cheque or postal order, value £3.95 and a large-sized stamped addressed envelope (with stamps to the value of 32p) to:

P.O. BOX 405, NORWICH, NR14 7DE



And look forward to receiving your first newsletter and adventure-pack!



## Technical Support

As a purchaser of a Mindscape software product you are eligible for 90 days of free technical support. You may phone our technical support representatives between 09:30 and 16:30 for instant help, or you may write to them at the address below. When you write in, please include full details of your computer and peripherals.

If you think there is a fault in the software, please check your system is correctly configured before contacting Mindscape Technical Services. If you are having trouble with a particular feature of the software, please make sure you read the relevant section in the manual before contacting us - you might find the answer you were looking for.

## New Releases/New Formats

For your convenience we have installed an information line detailing forthcoming new releases and releases on new formats. This line is updated regularly in order to give you up to the minute facts and information.

Simply ring 0898 234214 (calls charged at 34p per minute off peak and 45p per minute at peak times).

REMEMBER TO RETURN YOUR REGISTRATION CARD IMMEDIATELY TO US TO QUALIFY FOR TECHNICAL SUPPORT AND OUR PRODUCT INFORMATION SCHEME.



M I N D S C A P E

MINDSCAPE INTERNATIONAL LTD  
TECHNICAL SUPPORT DEPARTMENT  
CHARLES AVENUE  
MALTINGS PARK, BURGESS HILL  
WEST SUSSEX RH15 9PQ  
TEL: 0444 239600 FAX: 0444 248996



BROADSWORD



ANGLIA  
Television Limited





M I N D S C A P E

MINDSCAPE INTERNATIONAL LTD  
CHARLES AVENUE  
MALTINGS PARK  
BURGESS HILL  
WEST SUSSEX RH15 9PQ  
TEL: 0444 246333  
FAX: 0444 248996